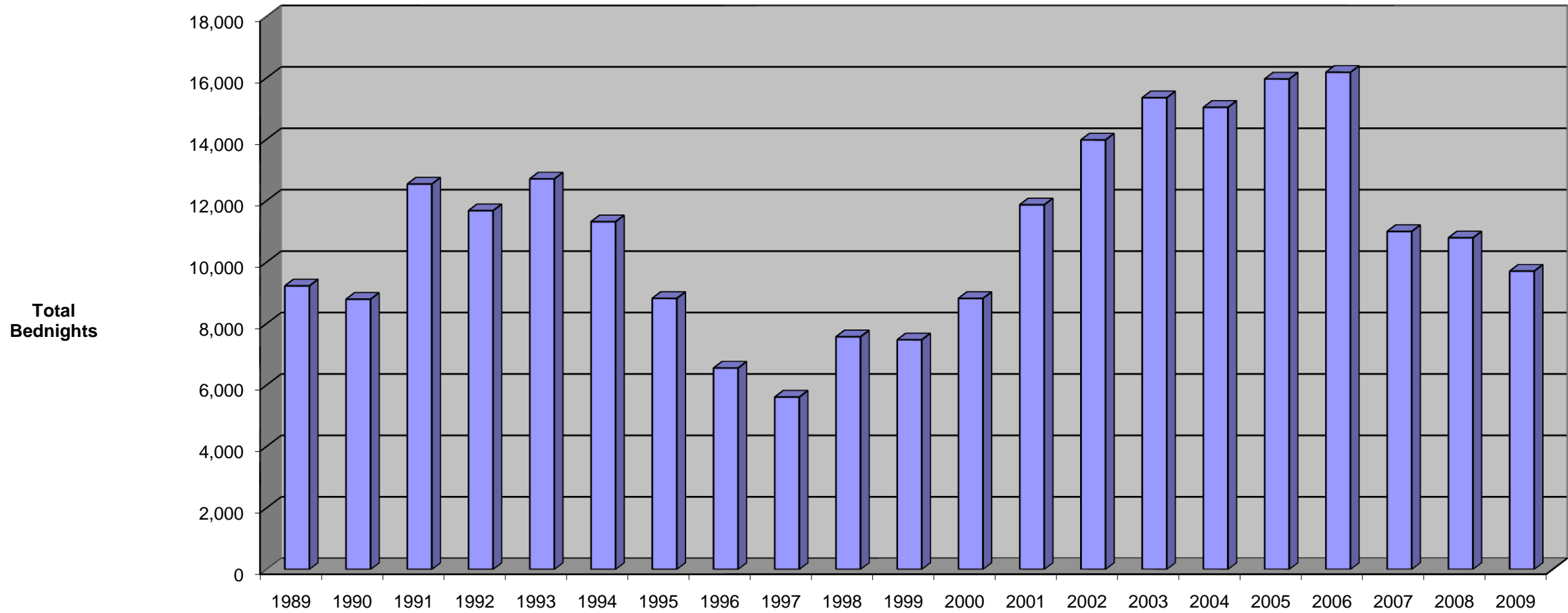


**Comparative Yearly Analysis of Bednights in Tompkins County from  
1989-2009 (Revised 4/2/10)**



### Total Number of Bednights By Provider

| Month        | Red Cross    | DSS       | Advocacy Center | Total        |
|--------------|--------------|-----------|-----------------|--------------|
| January      | 675          | 12        | 220             | 907          |
| February     | 719          | 0         | 215             | 934          |
| March        | 574          | 0         | 89              | 663          |
| April        | 435          | 4         | 96              | 535          |
| May          | 425          | 6         | 14              | 445          |
| June         | 536          | 0         | 107             | 643          |
| July         | 701          | 1         | 256             | 958          |
| August       | 884          | 17        | 177             | 1,078        |
| September    | 644          | 14        | 192             | 850          |
| October      | 874          | 23        | 191             | 1,088        |
| November     | 762          | 0         | 212             | 974          |
| December     | 415          | 0         | 218             | 633          |
| <b>Total</b> | <b>7,644</b> | <b>77</b> | <b>1,987</b>    | <b>9,708</b> |

Red Cross = Shelter (18 beds), and motel rooms

DSS = Department of Social Services (Motels)

Advocacy Center = Domestic Violence Shelter ( 9 beds)

**One bednight = one individual sheltered for one night.**

### Comparative Yearly Analysis

| Year | Bednights | % +/- |
|------|-----------|-------|
| 1989 | 9,228     | -     |
| 1990 | 8,795     | -5%   |
| 1991 | 12,544    | 43%   |
| 1992 | 11,678    | -7%   |
| 1993 | 12,712    | 9%    |
| 1994 | 11,319    | -11%  |
| 1995 | 8,823     | -22%  |
| 1996 | 6,554     | -26%  |
| 1997 | 5,609     | -14%  |
| 1998 | 7,572     | 35%   |
| 1999 | 7,474     | -1%   |
| 2000 | 8,822     | 18%   |
| 2001 | 11,869    | 35%   |
| 2002 | 13,981    | 18%   |
| 2003 | 15,353    | 10%   |
| 2004 | 15,041    | -2%   |
| 2005 | 15,965    | 6%    |
| 2006 | 16,183    | 1%    |
| 2007 | 11,001    | -32%  |
| 2008 | 10,794    | -2%   |
| 2009 | 9,708     | -10%  |

Prepared by the  
Human Services Coalition: 4/2/10  
homeless/shelsum/2009 figures.xls

## Shelter Usage Summary Table

Total Number of Bednights Provided in Tompkins County  
by Month for the Years 1991-2009

|              | 1991          | 1992          | 1993          | 1994          | 1995         | 1996         | 1997         | 1998         | 1999         | 2000         | 2001          | 2002          | 2003          | 2004          | 2005          | 2006          | 2007          | 2008          | 2009         |
|--------------|---------------|---------------|---------------|---------------|--------------|--------------|--------------|--------------|--------------|--------------|---------------|---------------|---------------|---------------|---------------|---------------|---------------|---------------|--------------|
| <b>Jan.</b>  | 1,000         | 917           | 1,000         | 943           | 814          | 530          | 397          | 601          | 811          | 608          | 1,272         | 1,223         | 1,425         | 1,284         | 1,237         | 1,700         | 986           | 833           | <b>907</b>   |
| <b>Feb.</b>  | 800           | 890           | 1,068         | 1,100         | 774          | 576          | 480          | 729          | 946          | 756          | 965           | 920           | 1,137         | 1,690         | 1,159         | 1,586         | 948           | 690           | <b>934</b>   |
| <b>Mar.</b>  | 1,129         | 1,072         | 955           | 1,226         | 820          | 633          | 406          | 475          | 939          | 396          | 761           | 1,189         | 1,344         | 1,685         | 1,413         | 1,649         | 963           | 1,114         | <b>663</b>   |
| <b>Apr.</b>  | 778           | 1,384         | 945           | 881           | 653          | 459          | 494          | 565          | 589          | 605          | 530           | 946           | 1,156         | 1,202         | 1,809         | 1,274         | 799           | 1,062         | <b>535</b>   |
| <b>May</b>   | 878           | 1,126         | 1,127         | 651           | 869          | 517          | 296          | 431          | 344          | 854          | 964           | 1,136         | 1,087         | 1,107         | 1,476         | 963           | 752           | 783           | <b>445</b>   |
| <b>June</b>  | 847           | 963           | 1,214         | 815           | 436          | 553          | 486          | 588          | 337          | 838          | 854           | 1,250         | 1,425         | 1,105         | 1,739         | 1,404         | 684           | 801           | <b>643</b>   |
| <b>July</b>  | 817           | 852           | 1,193         | 748           | 755          | 745          | 323          | 690          | 493          | 853          | 1,150         | 1,435         | 1,650         | 1,335         | 1,353         | 1,617         | 814           | 1,215         | <b>958</b>   |
| <b>Aug.</b>  | 1,176         | 1,026         | 1,089         | 1,126         | 1,065        | 695          | 611          | 437          | 585          | 963          | 1,038         | 1,025         | 1,388         | 1,319         | 1,505         | 1,705         | 972           | 766           | <b>1,078</b> |
| <b>Sep.</b>  | 1,526         | 1,225         | 1,380         | 1,150         | 666          | 608          | 487          | 582          | 713          | 792          | 866           | 1,195         | 1,271         | 958           | 936           | 1,330         | 819           | 1,033         | <b>850</b>   |
| <b>Oct.</b>  | 1,191         | 878           | 1,015         | 1,092         | 723          | 385          | 724          | 584          | 581          | 575          | 1,186         | 1,101         | 1,064         | 1,032         | 926           | 1,163         | 1,037         | 1,010         | <b>1,088</b> |
| <b>Nov.</b>  | 1,405         | 712           | 776           | 846           | 682          | 528          | 341          | 856          | 635          | 617          | 1,103         | 1,368         | 1,181         | 1,307         | 1,312         | 779           | 1,094         | 885           | <b>974</b>   |
| <b>Dec.</b>  | 997           | 633           | 950           | 741           | 566          | 325          | 564          | 1,034        | 501          | 965          | 1,180         | 1,193         | 1,225         | 1,017         | 1,100         | 1,013         | 1,133         | 602           | <b>633</b>   |
| <b>TOTAL</b> | <b>12,544</b> | <b>11,678</b> | <b>12,712</b> | <b>11,319</b> | <b>8,823</b> | <b>6,554</b> | <b>5,609</b> | <b>7,572</b> | <b>7,474</b> | <b>8,822</b> | <b>11,869</b> | <b>13,981</b> | <b>15,353</b> | <b>15,041</b> | <b>15,965</b> | <b>16,183</b> | <b>11,001</b> | <b>10,794</b> | <b>9,708</b> |

Shelter Providers: American Red Cross, Advocacy Center (formerly Task Force for Battered Women), Tompkins County Department of Social Services, and (1991-1995) EOC.

Prepared by the Human Services Coalition: 04/2/10.

homeless\shelsum\2009 figures.xls